



For Businesses

Proposal for natural enzyme cleaning

AZseed Japan Inc.

You can visit our website
with QR code. →



Do you have any of these problems?

cost

dirt

SDGs

smelly

harmful
insect

harmfulness



Cleaning is an essential part of our lives.

Not only does the heavy use of many detergents add time and cost.
Chemical-soaked detergents can also cause rough hands and poor health.

So, here is a suggestion.



OMOTENASHI SELECTION
2022年度受賞 Awarded in FY2022

For more information,
access via QR code

AZspread natural enzyme water for bath
~ ofuro ni ireru ~

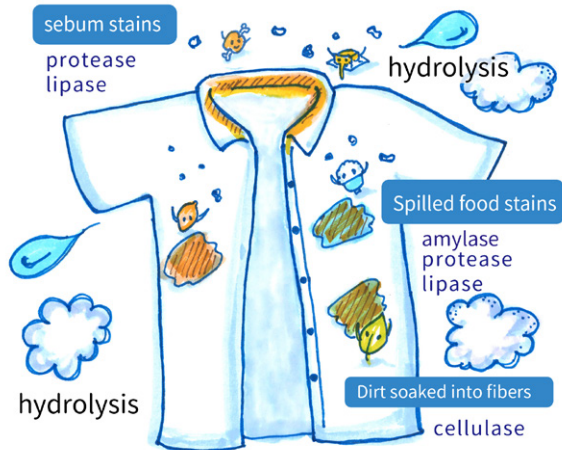
The award is chosen by foreigners living in Japan.
The award is given to products and services that are overflowing with
the spirit of excellent Japanese "Omotenashi" (hospitality).



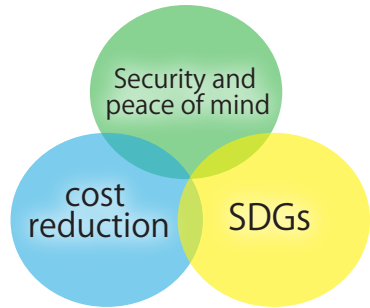
Just change the cleaning agent to a natural enzyme and we'll take care of your problem!

Enzyme function

Stains and odors are caused by "fats," "carbohydrates," and "proteins." Each group of enzymes acts as a catalyst to break down all organic pollutants into "carbon dioxide" and "water."



Decomposes into carbon dioxide gas and water



Safe and secure raw materials, no synthetic surfactants, etc.
 Made only with plant-derived natural enzymes and deep sea water, it contains no synthetic surfactants or bleaching agents. These products are gentle to both people and animals.

No more multiple detergents, just one complete bottle!
 It also reduces costs.

The enzymes in the AZspread series can be used anywhere. I used to use different detergents for different purposes, but this one bottle covers it all.

Environmentally friendly products

The enzymes contained in wastewater are 100% biodegradable and do not affect the ecosystem in any way, making it an environmentally friendly cleaning agent. It is also ideal for SDG initiatives. This product also improves the corporate image.

Safe and reliable natural enzymes that are friendly to people and the environment are ideal for all types of cleaning.



アズスプレッド
AZspread

香らない、臭わない。

天然酵素消臭剤



AZspread Deodorant – no scent no smell 500ml/1L/4L / 20L

Simply spray and let dry naturally.



酵素消臭スプレー使用例
 スプレーして自然乾燥するだけ



枕のニオイも

Examples of usage
 Odor that has seeped into bedding

カーテンも

Odor soaked into curtains

Decomposes not only odors, but also mites!

Decomposes and deodorizes the source of odors attached to spaces, curtains, carpets, and sofas, including the smells of sweat, grease, excrement, and cigarettes.

Because it is non-chemical, it can be used safely on beds, towels, underwear, and other items that come in direct contact with the skin.

By spraying it on bedding, pillows, cushions, etc. and allowing it to dry naturally, it can be used not only to remove odors, but also to care for allergens, as it even decomposes dust mites.

No alcohol or fragrance is used.



AZspread Cleaning -
wipe with only
natural enzymes
500ml/1L/4L / 20L

アズスプレッド
AZspread

天然酵素だけで拭く。

天然酵素掃除用



Versatile enzyme cleaner that can be used anywhere

Removes all kinds of stains and odors, including kitchen grease, bath, toilet, glass, stainless steel, and floors.

Enzymes decompose substances that cause stains and odors, leaving the area sparkling clean without the need for a second wipe.

It is safe for infants, pets, and others to touch or lick directly.

If poured down the drain, it reduces unpleasant odors coming up and prevents clogging of pipes.

Black mold around water

Mold is composed of filamentous cells called mycelia, which multiply by spores. Cleaning enzymes break down the protein components of the mycelial cell nucleus to remove mold and odor.

It can be used safely in the kitchen, around dining tables, and in water areas. *Some mold pigment may remain.

Examples of usage



Sprayed with cleaning enzyme and wiped off after 20 minutes.



Mold on the shower faucet was also cleaned up.



Mold on the walls has been cleaned up.

How to clean floors with cleaning enzymes

*Example of use in the food and beverage industry.



1 Dilute the enzyme to about 100 times. Spray undiluted solution on heavily soiled areas.



2 Spray the floor with a watering can. Pour it into crevices where pests are likely to occur.



3 Brush lightly with a deck brush.

4 Leave for more than 20 minutes

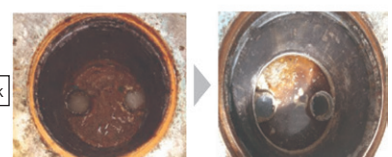
5 After 20 minutes, flush lightly with water.

Or leave it as it is until the next day and rinse it lightly with water.

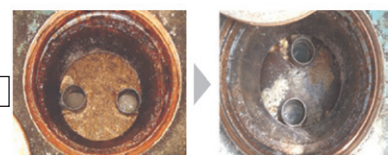
Using enzymes for cleaning Grease traps at Food Systems, Inc.



first tank



second tank



third tank

actual proof

Restaurant grease traps



Natural plant-derived enzymes completely break down all organic pollution sources.

It breaks down not only dirt but also odors, so if used on sinks, it eliminates unpleasant smells coming up from pipes.

When used for floor cleaning, it eliminates odors from drains and grease traps, and prevents cockroaches, flies, and rodents.

Residual active enzymes break down dirt in drainpipes, and their treatment effect prevents drainpipe clogging.

アズスプレッド AZspread

おふろにいれる。

天然酵素入浴剤



AZspread natural enzyme water for bath
~ ofuro ni ireru ~
500ml/1L/4L / 20L

This bath salt uses natural enzymes to gently break down dead skin cells, waste matter deep in the pores, and even sebum stains to promote metabolism and warm the body from the core. Simply soaking in the water cleanses the skin without the need to wash the body with soap and reduces body odor and age-related odors. In countries where it is not customary to soak in a bathtub, it can be used for baby baths and footbaths because it is non-chemical and gentle on the skin. Drainage is also prevented from clogging pipes as residual enzymes work to break down dirt and odors in the drains and keep them in use, so it is recommended for spas as well as apartment complexes and hotels where odors rising from the pipes are a concern.



Can be used in jetted tubs. Reduces the occurrence of Legionella bacteria.

Enzymes work to break down contaminants, so there are no equipment problems such as clogged filters. It also helps protect equipment by breaking down drain slime and plumbing dirt. The antibacterial lipopeptide (Bacillus subtilis enzyme) contained in the enzyme inhibits legionella and other malignant bacteria, thus keeping the water clean.

<Example of use in a home jet bath>



Legionella bacteria detection tests conducted at the Toyama Daiichi Hotel proved that no bacteria were detected at all.

*Experiments were conducted in a cooling tower on the roof of the hotel.

The system has been introduced to bathing facilities in public bathhouses and health promotion centers in Japan and has received high evaluations.

enlargement

採取年月日	2014年 6月24日15時00分	試料名	冷却水 (水温26.0℃)
試験項目	レジオネラ属菌 (cfu/100ml)	試験結果	不検出

test case Legionella pneumophila (bacteria that causes Legionnaires' disease) test result not detected

test results report

整理番号 081017-02
発行日 2014年 7月 7日

試験結果報告書

一様

株式会社 夏原工業株式会社
〒930-0044 富山県富山市富山町4-1-13
TEL:076-411-8811 FAX:076-411-9844

下記の通り御報告いたします。

試験結果

採取場所	富山第一ホテル 冷却塔 (冷風用) C3		
採取年月日	2014年 6月24日15時00分	試料名	冷却水 (水温26.0℃)
試験項目	レジオネラ属菌 (cfu/100ml)	試験結果	不検出
判定			
備考	この培養試験における検出限界は、10cfu/100ml です。		

分析方法: ろ過培養法



Utilizing leftover water after bathing to improve water quality

A reservoir with an excess of organic matter will eventually decay because of the large amount of blue-green algae and blue-green algae that grow in the reservoir.

One of our cooperating farmers reported that after putting leftover bath water into a pond with algae and bad odor once a week and continuing this practice twice, the algae disappeared after a month and the pond was revived.

When the right amount of enzymes are applied, it is expected to prevent and remove blue-green algae and algae.

Before enzyme spraying



After enzyme spraying



200 L of leftover bath water with enzymes for bathing was put into a reservoir where algae had grown due to excessive organic matter, once a week, twice in total.

(Left photo: Before adding enzyme Right photo: 3 weeks after the second addition)
July 2021 Demonstration in Kurihara City, Miyagi Prefecture